



Lab Test Report

A Comprehensive Keypoint Intelligence Laboratory Evaluation

KYOCERA TASKalfa 2552ci*

25 PPM Color/ 25 PPM Monochrome
Print / Scan / Copy / Fax



● Reliability		10.0
● Value		8.0
● Apps/Onboard Tools		Not Rated
● Image Quality		8.5
	Print Quality	9.0
	Copy Quality	7.0
● Usability		7.0
	Serviceability/Management	7.0
	Walk-up Experience	7.0
	Workstation Experience	7.0
● Mobility		Not Rated
● Security		9.0
● Features		10
● Speed		6.0
	Print Speed	4.5
	Scan Speed	9.5
	Copy Speed	4.5
● Power Consumption		Not Tested



OUR TAKE

The KYOCERA TASKalfa 2552ci is a great choice for mid-size workgroups that require both color and black and white output. The model is based on a device that exhibited flawless reliability, with no misfeeds or service calls experienced over the duration of its 125,000-impression test. Combined with the innovative toner design that allows an expired black toner cartridge to be switched over for use as a waste toner container, downtime promises to be minimal while waste and storage requirements will be greatly reduced. Output is presentable and effective in color and especially in black. Fast scan speeds, small color scan file sizes, and preprogrammed shortcuts within the scan and copy menus boost worker efficiency. Standard Wi-Fi Direct and NFC, plus support for Apple AirPrint, Google Cloud Print and Kyocera Mobile Print allow you to quickly and easily print from mobile devices. Plus, the device is HyPAS-enabled, for seamless integration with all of the Business Applications KYOCERA offers to reduce costs, streamline workflows and boost security. A competitive price and robust feature set also make the device a very good value proposition. BLI highly recommends the KYOCERA TASKalfa 2552ci.

KYOCERA TASKalfa 2552ci Fast Facts*

SRP/Street Price	\$8,110
Max Monthly Duty Cycle	100,000 impressions
Manufacturer's Recommended Monthly Volume	Info not avail
Rated Speed	25 ppm color/25 ppm black
Std Paper Source(s)	Dual drawer
Std Paper Capacity	1,000 sheets
Paper Weights	14-lb bond to 166-lb index
Bypass/Paper Weights	150-sheet/14-lb bond to 166-lb index
Max Paper Capacity	7,150 sheets
System Memory (Std/Max)	4-GB RAM
Document Feeder/ Capacity	Opt RADFs and DSPF
PDL/PCL	PCL 5c/6/XL, PostScript 3, XPS
HDD (Std/Max)	320 GB
Scanner Technology/Speed	CCD/48 ipm color, 48 ipm black or 80 ipm color, 80 ipm black
*At time of publication	

Test Duration: Two months, including a 125,000-impression and 12,500-scan durability test.

The gauges above represent Excellent (9–10), Very Good (7–8.5), Good (4–6.5), Fair (1.5–3.5) and Poor (0–1).

Please visit buyerslab.com/bliQ for more information.

* Reliability, scan and image quality results are based on the performance of the KYOCERA TASKalfa 3252ci, which uses the same engine.

BENEFITS

Maximize uptime thanks to flawless reliability

Competitive price point and above average feature set make for a very good value proposition

High quality printed and copied output in black meets the needs of general office environments

Sharp and consistent color business graphics and above average background reproduction help meet output needs of marketing-intensive environments

Ensure unique settings are one click away via the driver's Quick Print tab, which enables users to create and save custom profiles as graphical icons

Streamline scan and copy workflows with shortcut keys and up to 50 job programs

Print from anywhere with mobile printing support for both Android and Apple devices

Take advantage of KYOCERA's HyPAS Platform to connect to specialized and embedded applications

Reduce waste and storage requirements with the ability to use an expired black toner bottle as a waste toner container

Conveniently switch between PCL and PostScript for different job types from within the KX driver

ADVANTAGES

Fast scan speeds and small color scan file sizes keep workflows moving

Higher than average memory allows for faster processing and more job storage

Above average maximum paper capacity means less time spent having to refill paper

LIMITATIONS

Scan and copy previews do not support page deletion or onscreen editing

Scan to USB does not support the creation of sub-folders

Preview is not available for USB printing

Only quantity can be modified for jobs in queue

RELIABILITY

10

Flawless durability performance; no service calls required; no misfeeds

	Meter Count (Impressions)
Impressions Printed	125,000
Scanned Pages	12,500
Misfeeds	0
Misfeed Rate	Not applicable
Service Calls	0

VALUE

8.0

Given its outstanding overall performance, including excellent reliability and a robust feature set, and competitive price point, the device makes for a great value proposition.

APPS/ONBOARD TOOLS

Not Rated

KYOCERA's HyPAS Platform offers both Java-based and Web Services-based software development kits. According to KYOCERA, this approach provides a more open and flexible developer environment, which enables integration with systems that are already implemented in a customer's enterprise. DocuWare Connector serves as a bi-directional bridge between HyPAS-enabled and capable MFPs and DocuWare on-premises and cloud-based enterprise content management systems.



AccuSender, powered by Biscom, allows users to scan and send documents quickly from their KYOCERA MFP using Biscom Secure File Transfer, email, or fax. KYOCERA notes that the solution is well-suited for organizations operating in the legal, financial, healthcare, and government segments, as they often send large files and are subject to tight security and privacy regulations.



CentraQ and CentraQPro enable businesses to control data and printing costs while enhancing worker productivity. Users can release print jobs from any compatible device on the network. The solutions also support QR code release functionality. The Pro edition of the solution also offers six details reports, including device usage, individual user usage, device ranking, and more.



DMConnect and DMConnect Pro enhance the benefits of a document management system by transforming KYOCERA MFPs into on-ramps for routing documents into any folder in an organization's DMS, allowing users to store, retrieve and share files quickly, easily and securely. In testing it was found to be easy for administrators to develop, deploy and maintain workflows, and even easier for end-users to use the system for their capture routing needs.



PinPoint Scan 3 allows for scanning from the MFP to a PC with added speed, functions and versatility. Users can scan to a series of preconfigured destinations after entering a PIN, and all data is encrypted to protect sensitive information. The application easily allows end-users to create their own PIN and personalized scan destinations. It also requires minimal involvement on the part of the IT staff.



Teaching Assistant enables automated creation, printing and grading of multiple-choice exams using popular bubble-sheet forms, right from supported MFPs, with no need for client PC or server software.



SharePoint Connector 4 allows users to access documents on the SharePoint server directly from the MFP's control panel. Square 9 Connector allows users to scan paper documents directly into existing Square 9 Global Search workflows.

IMAGE QUALITY

8.5

	Print Mode	Copy Mode
Text	Excellent	Very Good
Line Art	Excellent	Very Good
Halftone Pattern	Excellent	Very Good
Halftone Range	Excellent	Very Good
Solids	Very Good	Very Good
Color Photographic Images	Very Good	Good
Color Business Graphics	Very Good	Very Good

PRINT QUALITY

9.0

- Sharp color business graphics and above average reproduction of backgrounds and pastel shades
- Dark and fully formed characters; bold solids
- Bright color saturation; flesh tones are slightly yellow
- Consistent color output throughout testing
- Distinct and consistent fine lines
- Excellent halftone range in black

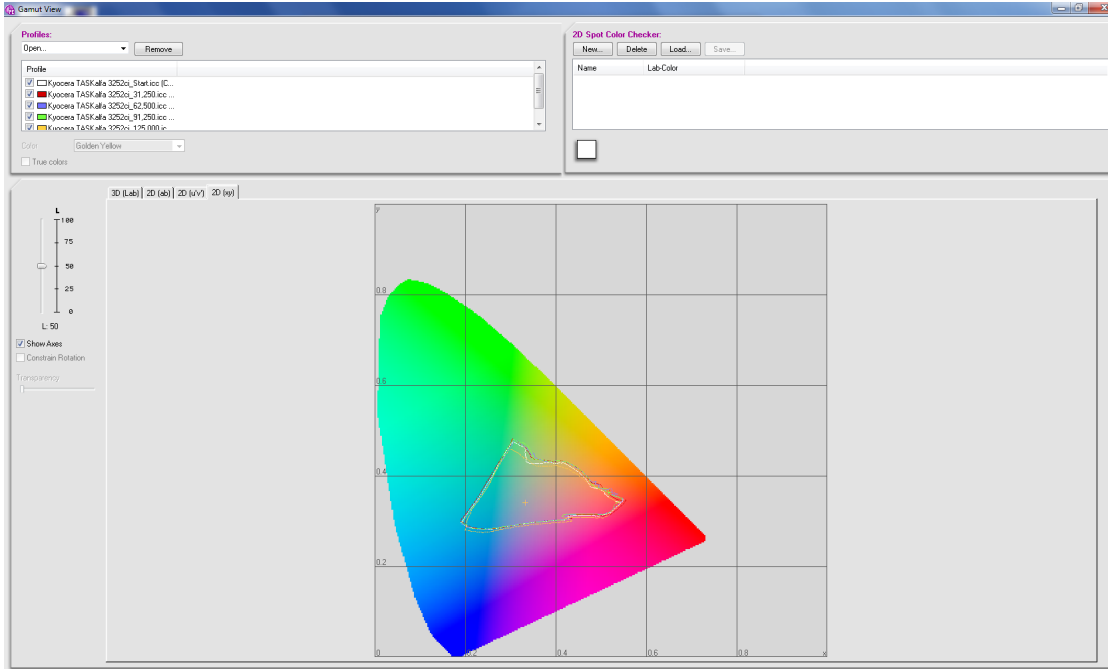
Print Density

	Tested Device	Competitive Average
Black	1.51	1.48
Cyan	1.32	1.09
Magenta	1.22	1.18
Yellow	0.98	0.90

Density of a printed image with blocks of all solid colors, based on the average of two readings each for cyan, magenta and yellow, and four different locations on the output for black. The higher the reading, the darker the image.

GAMUT VARIANCE READINGS

Test Point	DELTA E	DELTA E (2000)	RATING
31,250	1.71	1.23	Excellent
62,500	1.44	1.04	Excellent
91,250	1.77	1.37	Excellent
125,000	2.89	1.97	Very Good
Average BLI Rating			Excellent



Delta E is a colorimetric measurement assessing the distance between colors. The readings reflect the average shift of four specific color points within the color gamut from the previous measured point.

COPY QUALITY

7.0

Bright saturation and above average reproduction of pastel shades

Bright saturation and natural skin tones

Higher color halftone levels lacked separation

Distinct and consistent fine lines

Dark and fully formed characters; bold solids

Very good halftone range in black

COPY DENSITY

	ORIGINAL	TESTED COPY	Competitive Average
Black	1.92	1.32	1.51
Cyan	1.33	1.09	1.28
Magenta	1.29	1.09	1.23
Yellow	0.99	0.91	1.84

Density of a printed image with blocks of all solid colors, based on the average of two readings each for cyan, magenta and yellow, and two different locations on the output for black. The higher the reading, the darker the image.

USABILITY

7.0

SERVICEABILITY/MANAGEMENT

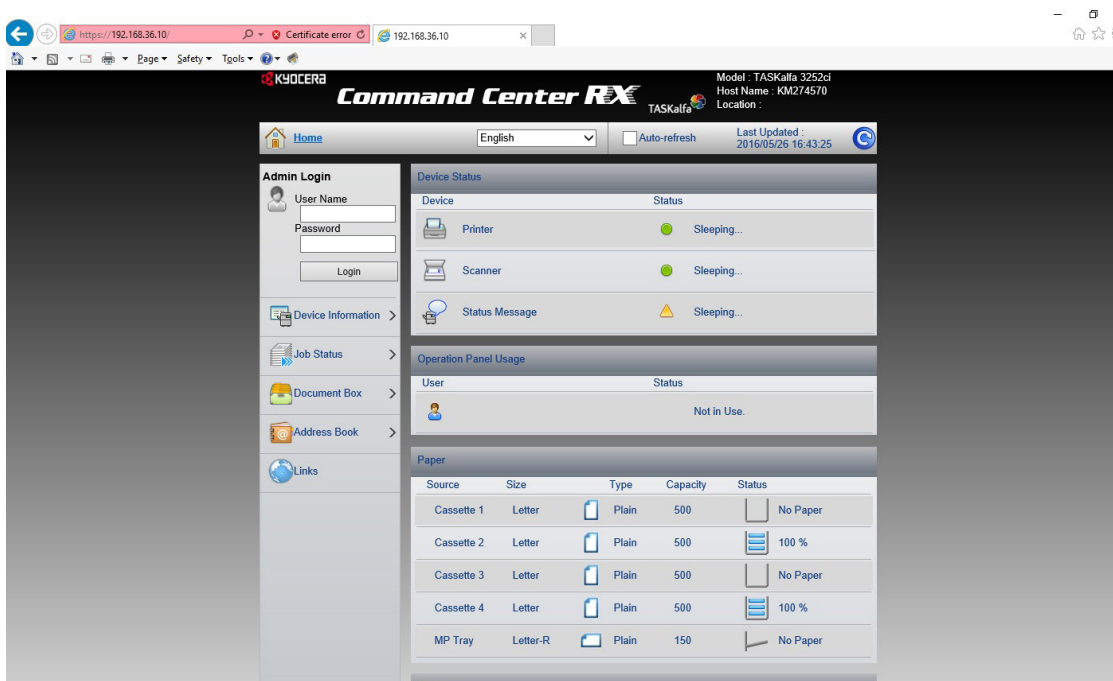
7.0

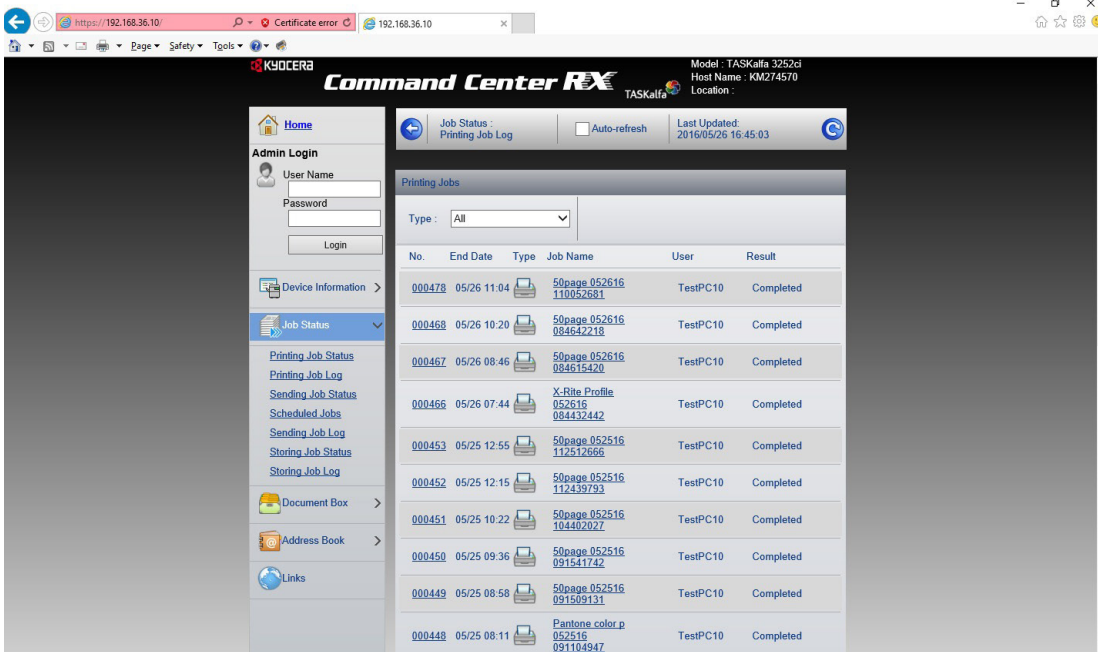
Drivers can be installed simultaneously and at the same time as KYOCERA Net Viewer, the feedback utility, and no user intervention is required for the configuration of accessories.

The install utility also has built-in test-page printing, but drivers cannot be pushed out to multiple PCs during install.

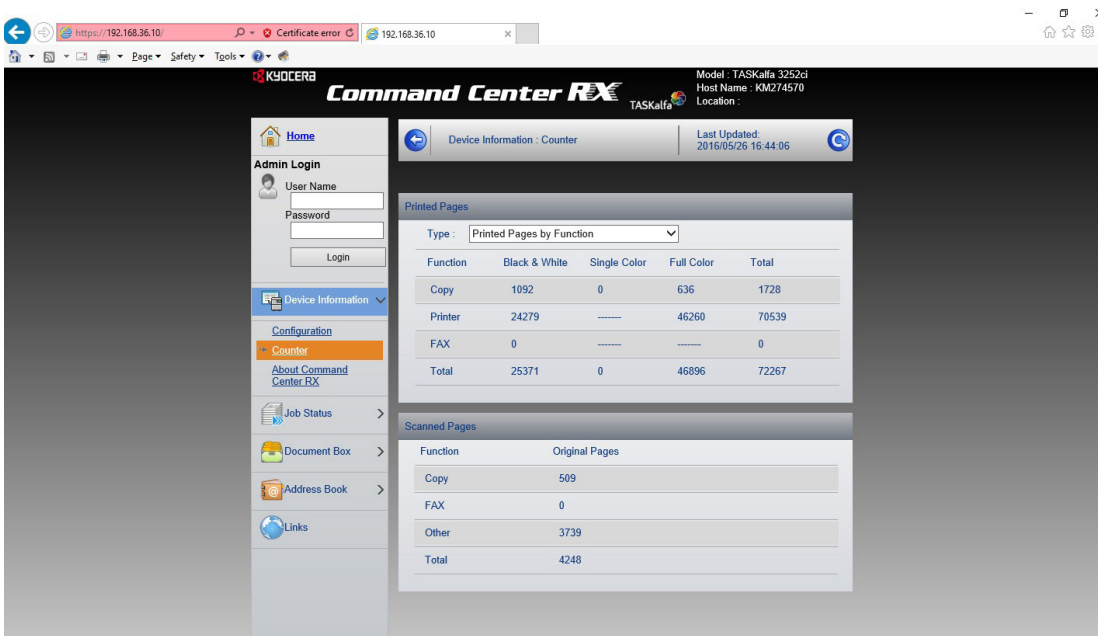
KYOCERA Net Viewer enables device discovery and management of Kyocera hardware on the network. Administrators can sort devices by name or IP address and specify which information on monitored devices is shown. KYOCERA Net Viewer also allows administrators to create groups of products based on reporting or error notification requirements. Within a “report group” an administrator can receive reports via e-mail outlining a variety of device statistics, including printed page volumes and consumables levels, at defined time intervals. It does not support remote access to the device’s service mode, remote firmware upgrades, or remote driver installation. In comparison, some competing machines can search for new firmware either from the control panel if connected or from the web page.

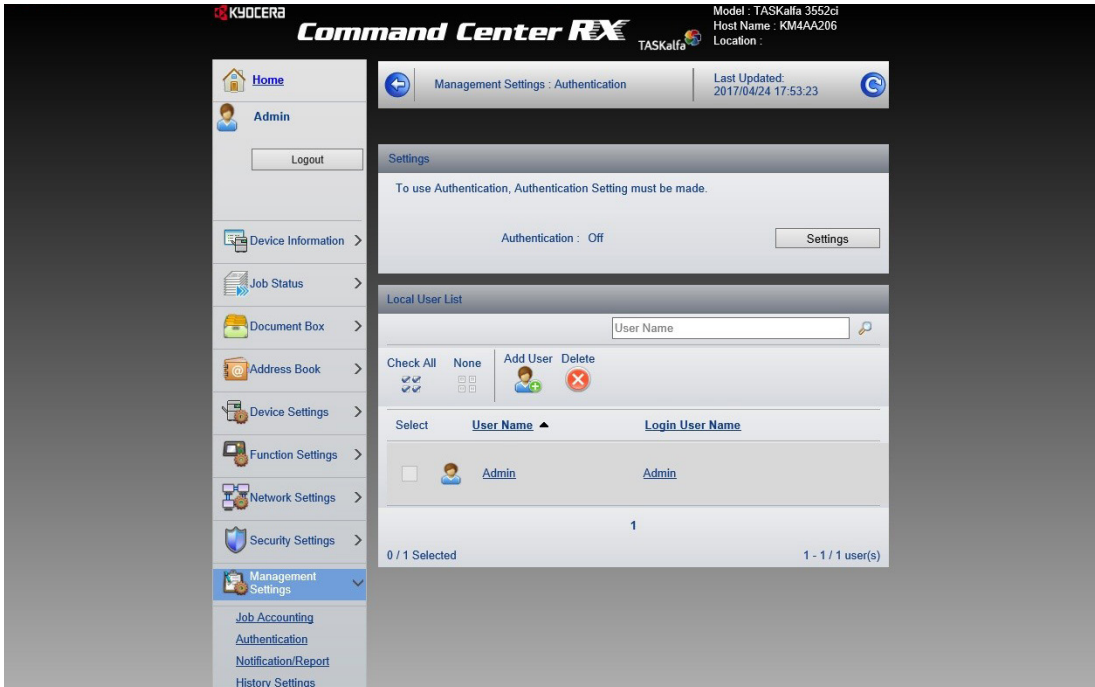
KYOCERA Net Admin is a free server-based solution that gives network administrators and help-desk staff control of all network-enabled printers and MFPs. It installs in minutes, and is particularly easy to navigate, with well-marked tabs and support for drag-and-drop actions. It allows users to remotely configure and automate the distribution of print drivers, monitor their status, manage individual or groups of devices, clone settings to like devices and check on the level of consumables. Optional plug-ins offer print queue management, print job reporting and full-featured print accounting. KYOCERA Net Admin does not, however, support capture of copy meter data. In addition, there is no mechanism to limit end-user access to device capabilities such as color printing. It does support scan or send meter data, job history and status reports can be generated in HTML, PDF, or CSV formats and saved to the network via KYOCERA Net Admin, and these reports can be set to run at set intervals and automatically e-mailed to a list of recipients.





The web user interface is easy to navigate, with functions clearly labelled and selectable. However, job history cannot be exported from the web user interface. Access codes can be assigned so that print, scan and copy usage can be restricted and tracked by user and group. Detailed counters and printing and sending logs are also provided. However, administrators cannot remotely add or edit destinations from the LDAP servers. Such a capability, while rare, can be a valuable time saver, and also prevents errors in destinations that must be entered manually.





Both length and width guides slide in the drawers when adjusting paper size. In addition, stickers available on side to side guides are easy to read and break down different height limits from standard paper to envelope height. Plus, the soft close drawers make for no slamming of cassettes.



The process for replacing toner is simple and clean, and toner can be replaced on the fly. Further, an expired black toner bottle can be used as a waste toner container, reducing waste, as well as storage requirements for the customer. A Summer 2016 Outstanding Achievement in Innovation winner, making the change is a cinch, with users only needing to remove the toner bottle, flip it around, and insert it into the waste toner container compartment at the front of the device.

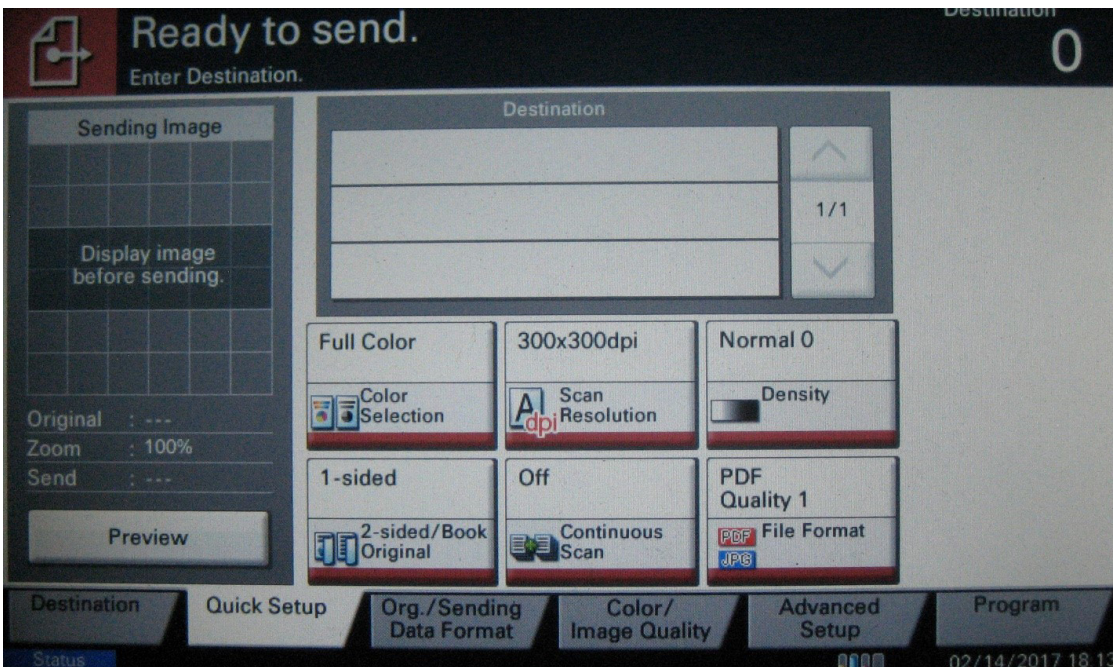
CONSUMABLE RATED YIELDS

USER- REPLACEABLE	Competitive Average	Tested Model
Black Toner	27,364.00	20,000.00
Color Toner	20,158.00	12,000.00
Black Photoconductor		
Color Photoconductor		
SERVICE- REPLACEABLE	Competitive Average	Tested Model
Black Developer	368,041.00	600,000.00
Color Developer	276,528.00	600,000.00
Black Photoconductor	118,379.00	200,000.00
Color Photoconductor	87,795.00	200,000.00

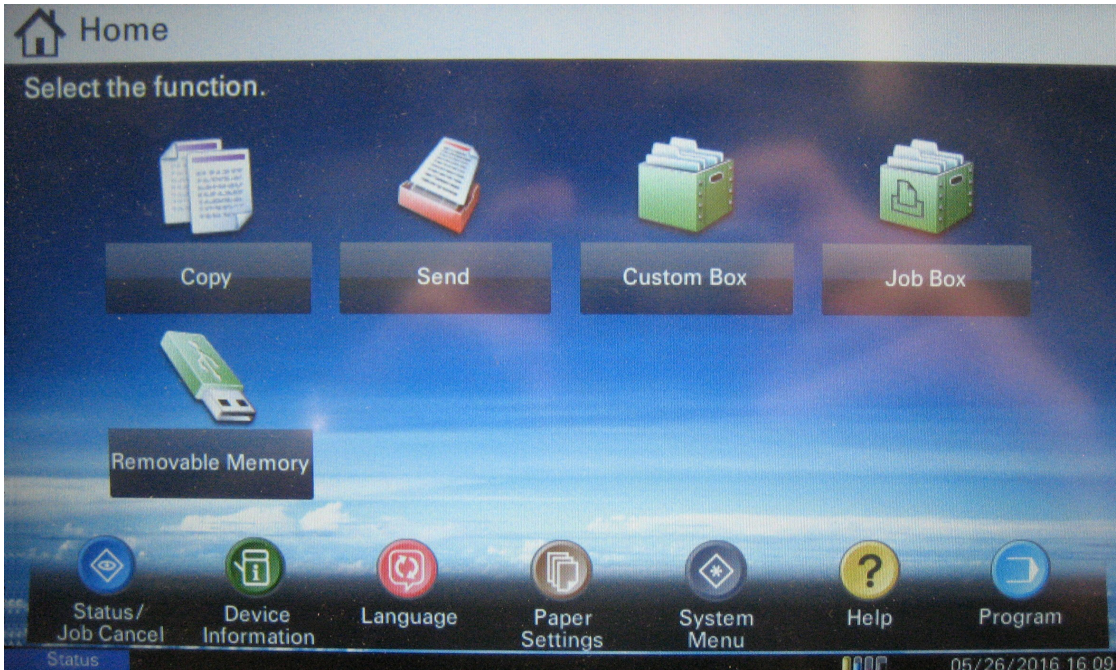
WALK-UP EXPERIENCE

7.0

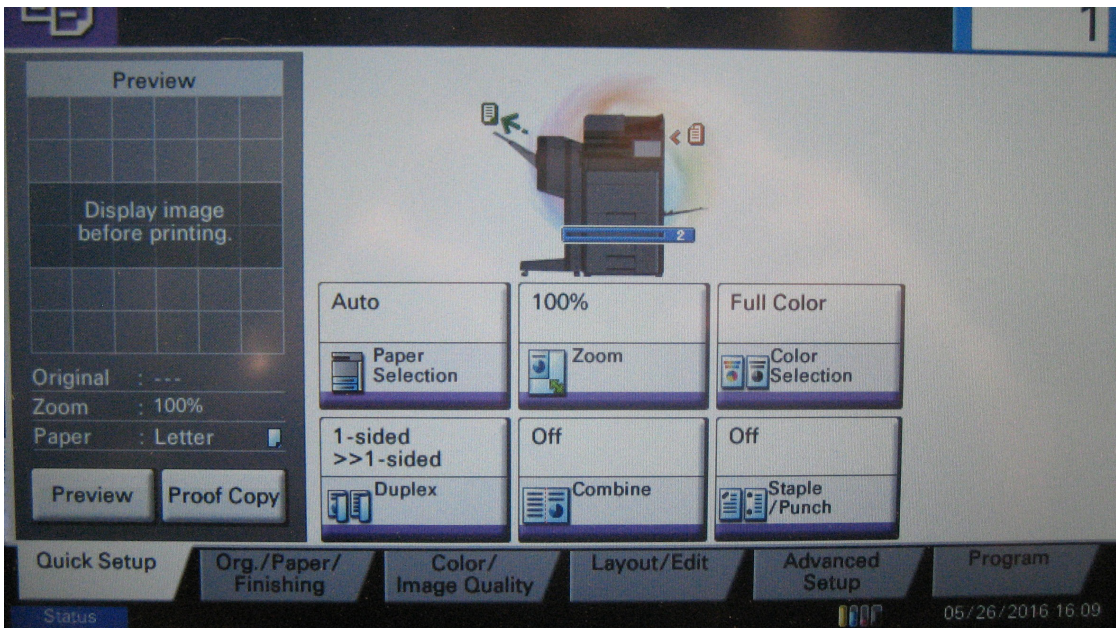
- The scan and copy menus can be customized by adding up to six shortcuts from other menus to the main menu for easier access. In addition, up to 50 scan jobs can be saved as job programs within the scan menu or even on the Home screen to streamline workflow of commonly run jobs.
- Scan and Copy previews allow users to enlarge the view and move images around, but do not support page deletion or onscreen editing.
- Dynamic help is provided; users simply click on the “?” icon that appears on screen after a function is selected.
- Highly intuitive to set up scanning to a network folder. Searchable PDF is supported with the optional scan extension kit. Plus, a number of available apps support OCR, including DM Connect Pro powered by Nuance®, Exchange Connector and PinPoint Scan 3.
- Up to four LDAP servers are supported and destination addresses entered manually at the control panel can be added to the device-resident address book on the fly by end-users.
- USB menus auto-populate when a USB device is inserted into the port, whereas some other systems require users to navigate through several menus to locate USB capabilities.
- Scan to USB does not support access to or the creation of sub-folders more than three levels down. This means that if a user has sub-folders on their USB below three levels, they cannot access that folder.
- Preview is not available for USB printing, and USB printing does not support the access of sub-folders more than three levels down.
- Jobs can be moved to the top of the queue or one slot at a time, but only quantity can be modified for jobs in queue.



All commonly used scan features are programmable from the same screen, including color mode, resolution, format, compact PDF, duplex and preview, helping to maximize efficiency. Plus, multiple destinations are supported in one session.



Up to 50 jobs can be stored as job programs and made accessible from the Home screen to streamline workflow.

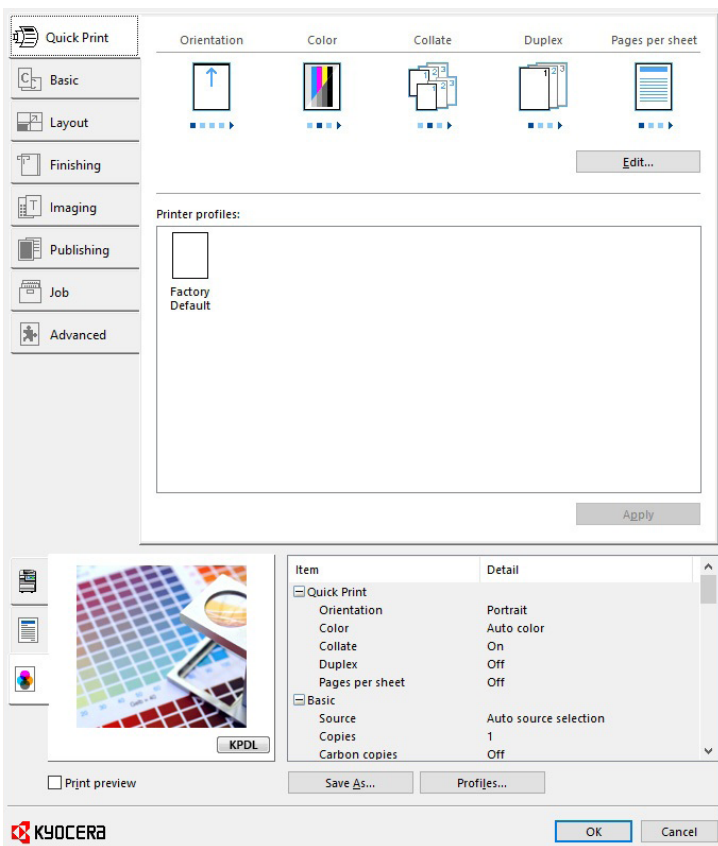


Most of the selections for a typical copy job can be accessed from the Quick Setup tab, including duplex, paper source, color mode, reduction/enlargement and finishing. The control panel can also be angled in multiple positions. Each user can also customize the location of each key on the main page and add settings to the main screen and select their default home screen and language.

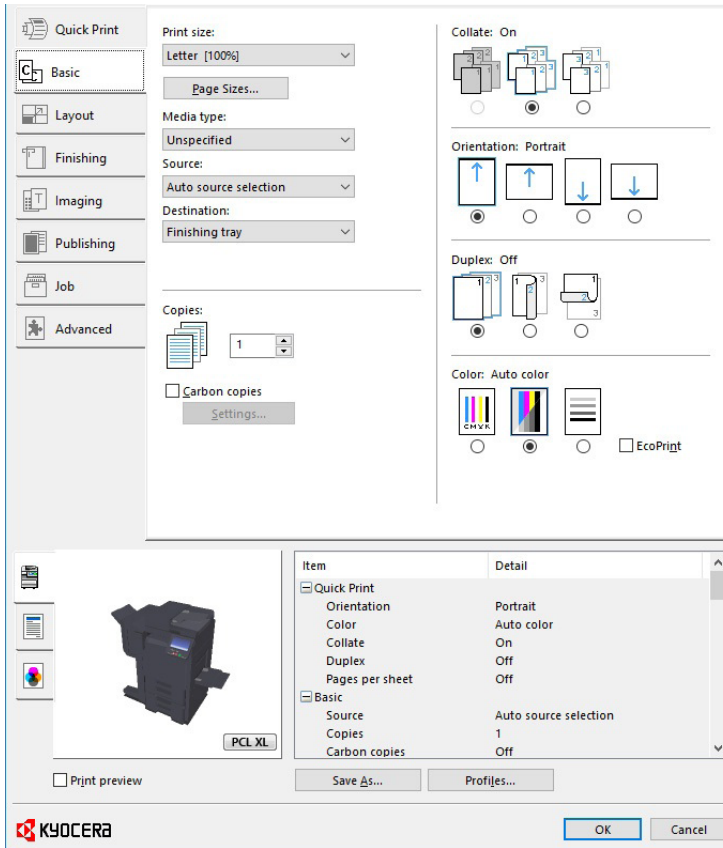
WORKSTATION EXPERIENCE

7.0

- Streamline complex workflows via the Quick Print tab.
- Easily switch between PCL and PostScript drivers for different job types, whereas competitors typically require users to have to go through printer properties in order to switch between drivers.
- Direct print capabilities are robust and include support for PDF, JPEG, TIFF, DOC, XLS and PPT formats, as well as the ability to output multiple jobs and sets, change quantity, change simplex/duplex, select paper size and source, apply corner stapling and create profiles.
- Secure print procedures are intuitive, and username and filename can be changed via the Custom Name function; however, any user can delete a secure print job.
- Highly detailed consumables status and highly customizable email alerts from the embedded web server.
- No support for print job deletion notification.
- The driver includes Eco Print (reduces the amount of toner used) and Print Preview (provides on-screen preview of every page of the job, along with the ability to zoom in and cancel the job). However, no changes can be made to the document from the preview function.
- Any driver settings that are not compatible are grayed out and not selectable, whereas when you move the cursor over the grayed out area, there is an explanation as to why you cannot select this feature.



While an entire tab of the driver cannot be customized, via the Quick Print tab, users can save custom profiles that are stored as graphical icons to allow programming of complex jobs in one click. Users can click on the Save As button on any of the tabs to save currently selected settings, name the new profile and add a description for storage on the Quick Print tab.



Most typical print job settings are selectable from the Basic tab, including color or black and white mode, paper type and source, duplex, quantity and collate sets, although finishing selections such as stapling are programmable from the Finishing tab.

MOBILITY

Not Rated

The device provides standard Wi-Fi Direct and NFC support for Android mobile devices. Mobile printing is also supported via Apple AirPrint, Google Cloud Print and Kyocera Mobile Print.

SECURITY

9.0

Standard encrypted secure print and encrypted PDF mode

Optional hard drive overwrite and encryption

Optional ID card authentication methods

Administrators can limit or restrict access to color, the control panel and USB

Security Features

AUTHENTICATION	
Network user authentication at control panel	Standard
Windows	Yes
Novell NetWare NDPS	NA
LDAP	No
Kerberos	Yes
802.1x wireless	Yes
SMTP	Yes
POP before SMTP	Yes
Biometric	No
ID Card	Optional
HID	Yes
Common Access	Yes
Other	Equitrac, SCM, RFIDEAS, ELATEC
Registered department or user ID codes	Standard
Number	1,000
ACCESS CONTROL	
Restrict color	Standard
Control panel lock/disablement	Standard
Restrict access to address book	Standard
Restrict USB port	Standard
Restrict direct printing	Standard
Restrict other	Any function using User ID (Print restriction totals, scan)
HARD DRIVE	
Encryption	Optional
Maximum level	256-bit AES
Overwrite	Optional
Method	Customer can choose One-time Overwrite-Erase or the U.S. Department of Defense DoD 5220.22-M (Three passes)
Maximum number after a job	3 times
Maximum number at end of lease	3 times
Lock	No
Removable	No
Password-protected mailboxes	Standard
Data auto-deletion in mailboxes	Standard
JOB TRACKING	
Job logs	Standard
Digital signature	No
Verify document came from device	NA
Verify document came from specific user	NA

JOB PROTECTION	
Encrypted secure print	Standard
Secure print	Standard
Encrypted scanning	Standard
Maximum level	AES 128 bit
For scan to USB	Yes
Unauthorized scan/copy protection block (watermark)	Optional
Compatible with same-brand devices	Yes
Compatible with third-party devices	No
NETWORK SECURITY/PROTOCOLS	
Protocol disablement	Standard
Port disablement	Standard
IP address filtering	Standard
MAC address filtering	Yes
HTTPS	Standard
Self-signed certificate	Yes
Certificate signing request	Yes
IPsec	Standard
IPv6	Standard
Secure Sockets Layer (SSL)	Standard
S/MIME encryption	INA
SNMPv3 support	Standard
Transport Layer Security (TLS)	Standard
Trusted Platform Module (TPM)	INA
CERTIFICATIONS	
Common Criteria	Yes
EAL level	EAL 3
Capabilities certified	Based on IEEE2600.1
FIPS 140-2	Optional
Level	2
IEEE 2600	Yes
OTHER	
Administrator password length	Up to 64 digits (UTF-8)
Password-protected web server	Yes
Additional features	NA
Third-party features	NA

INA: The vendor declined to provide this information
 NA: Not applicable

FEATURES

10

Higher than average memory allows for faster processing of jobs

Above average maximum paper capacities reduce intervention rates

A range of optional finishers allow for more complex output (500-sheet internal finisher with multi-position staple capacity of 50 sheets and optional hole punching; 1,000-sheet finisher with multi-position staple capacity of 50 sheets and optional hole punching; and 4,000-sheet finisher with multi-position stapling of up to 65 sheets, and optional booklet folder and tri-fold unit)

SPEED

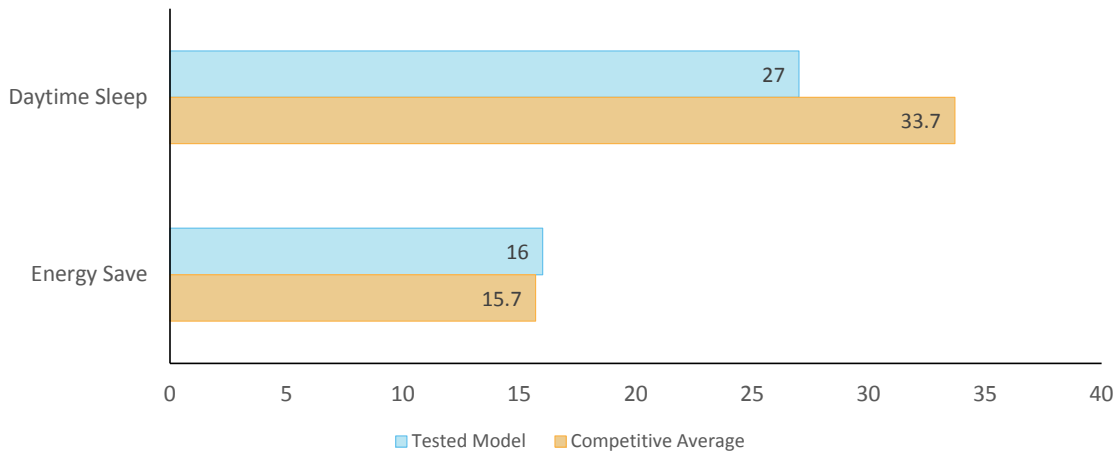
6.0

PRINT SPEED

4.5

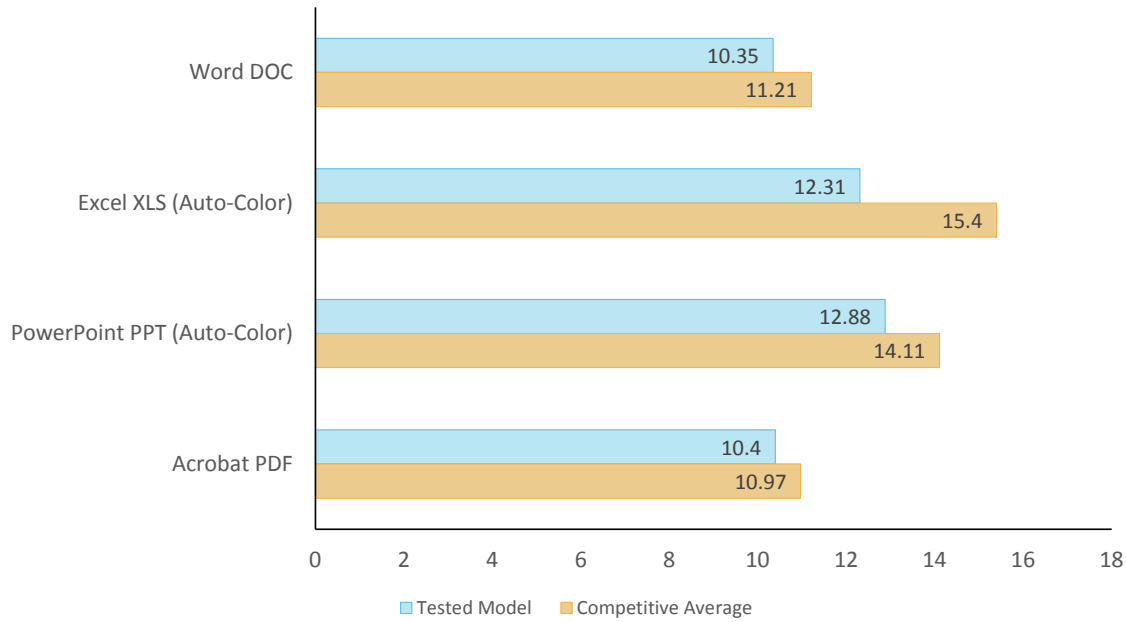
Though it demonstrated faster than average first-print times from sleep mode and for XLS documents, the unit's print speed was competitive all in all.

Recovery Times (in Seconds)



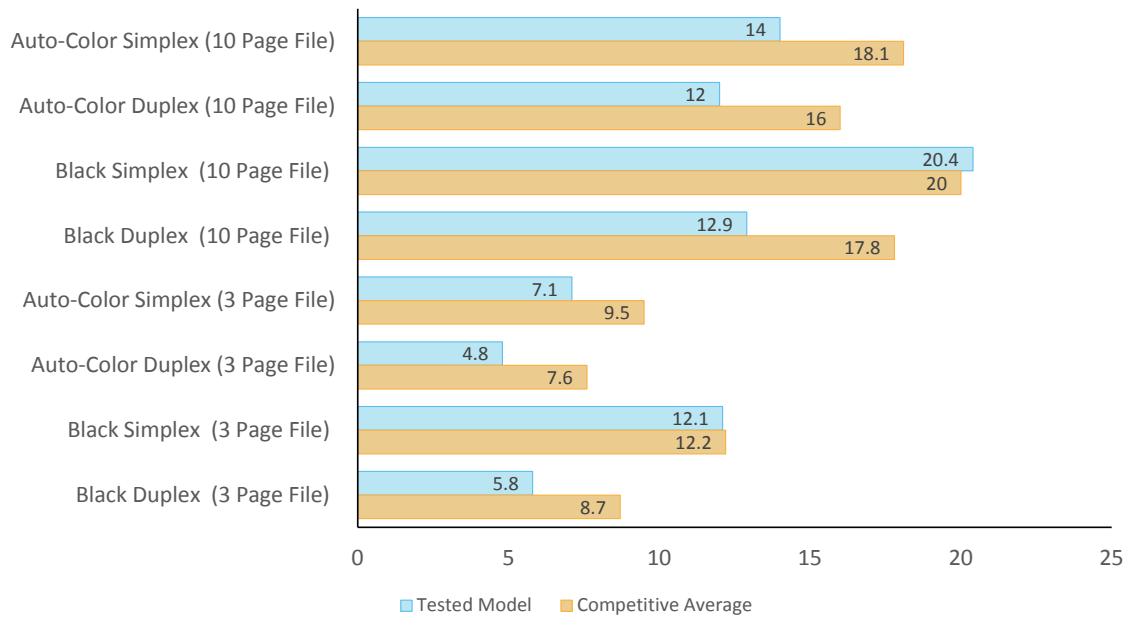
Recovery time in seconds indicates the time it took to warm up, process the image and deliver a single-page test document to the output tray. The unit was tested with the PCL driver.

First-Page Print Time From Ready Mode by File Type (in Seconds)



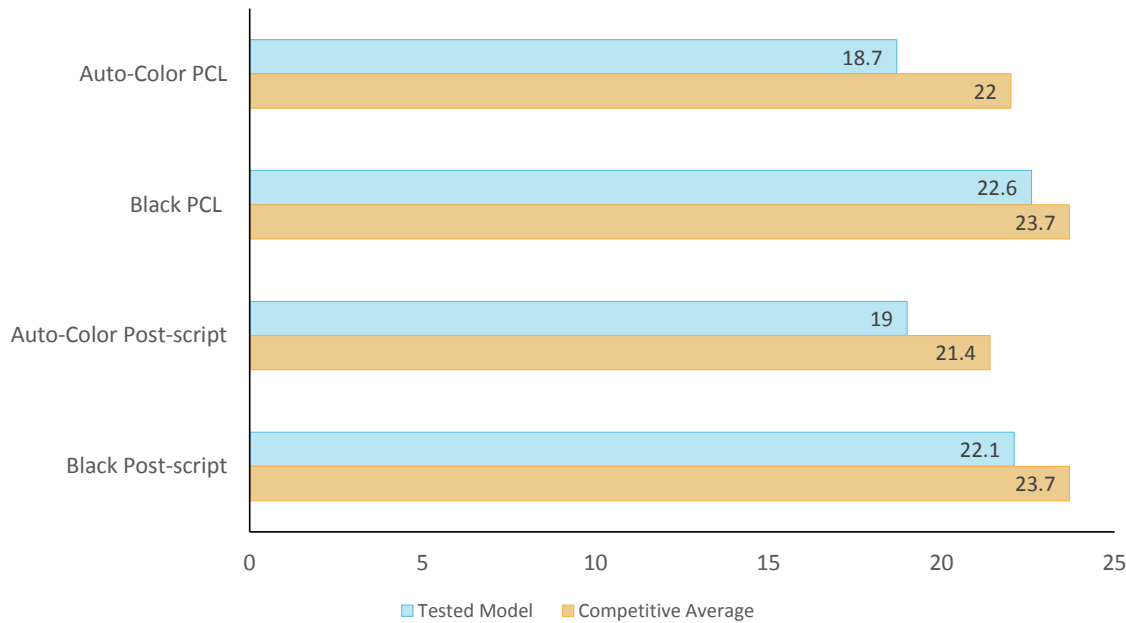
First-print time indicates the time it took to process the image and deliver a single-page test document to the output tray. The unit was tested using the PCL driver.

First-Set Print Speed (Single Set; in PPM)



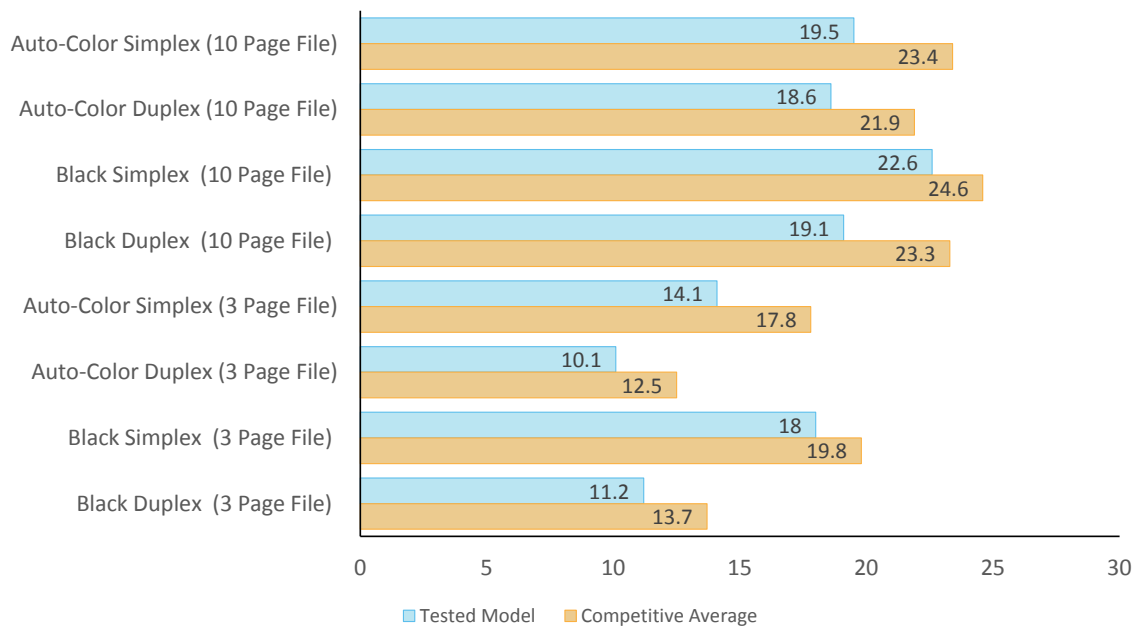
Single-set speed is tested using a BLI's proprietary 3-page and a 10-page testing document. The unit was tested using the PCL driver.

Job Stream (Speed in PPM)



BLI's job stream includes Word documents, Outlook email messages, Excel spreadsheets, PowerPoint, HTML and Acrobat PDF files, totaling 19 pages. This test simulates the type of traffic a typical device might experience in a real-world, multi-user environment. All of the files are sent to the device as a group, at which time the stopwatch begins; timing ends when the last page of the last file exits the device.

Average Print Speed (Multi-Set; in PPM)



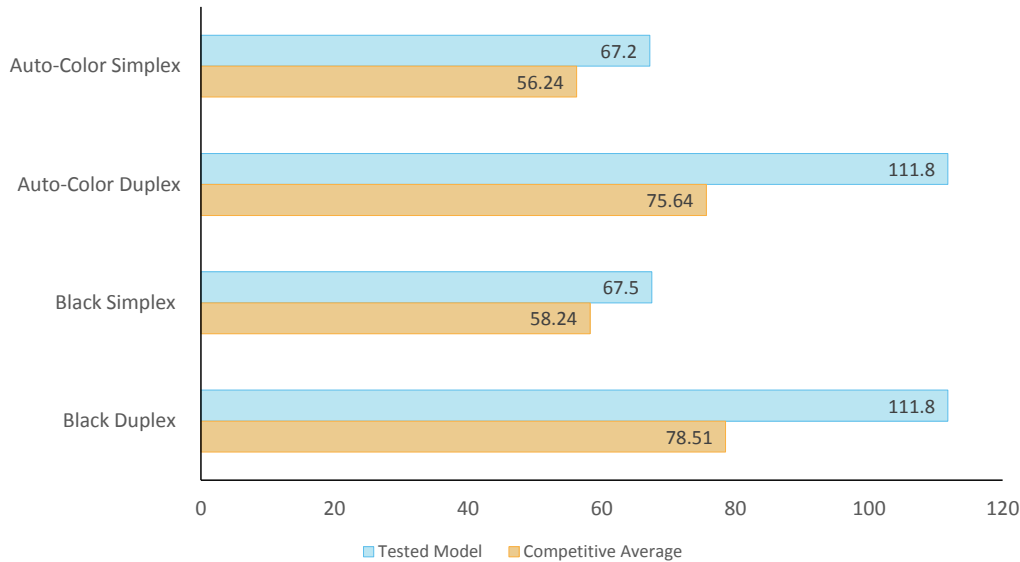
Speed is tested using a 10-page mixed-color-and-black document and a 10-page black document. BLI obtains the overall speed by averaging the tested speed for each run length (1, 5 and 10 sets). The unit was tested using the PCL driver.

SCAN SPEED

9.5

In BLI's scan tests, the unit was among the fastest in most modes tested. Color file size was also smaller than average when using compression. Compression is not available in black, but file size is still much smaller than the average of other non-compressed files.

Scan Speed (in IPM)



Testing is conducted with a 10-page file scanned in default mode at 300 dpi in PDF format.

Scan File Size (in KB)

	Tested Model	Competitive Average
Auto-Color (Standard Compression)	564	992.5
Auto-Color (High Compression)	139	267.38
Black (Standard Compression)	118	199.1

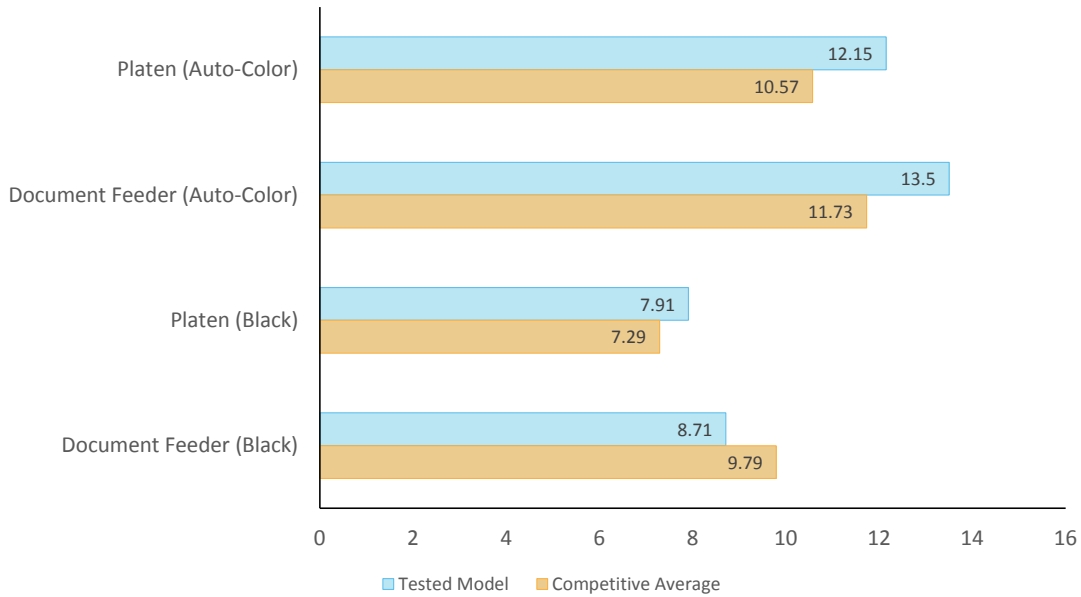
Testing is conducted with single-page files scanned at 300 dpi in PDF format.

COPY SPEED

4.5

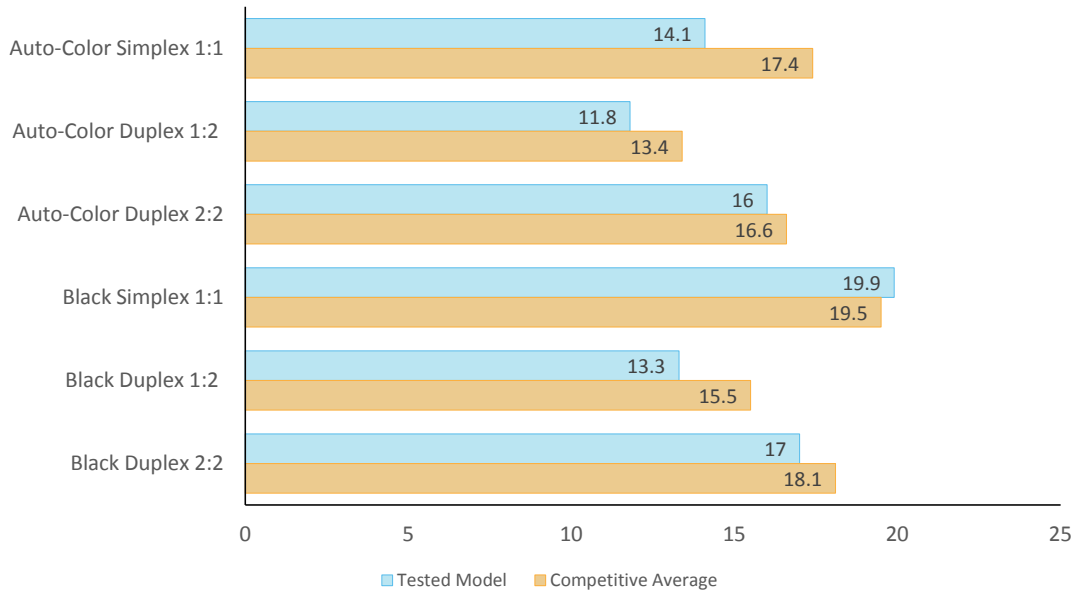
The TASKalfa 2552ci's copy speeds were in line with those of the devices in its competitive group for both short- and long-run simplex and duplex jobs.

First-Copy Times (in Seconds)



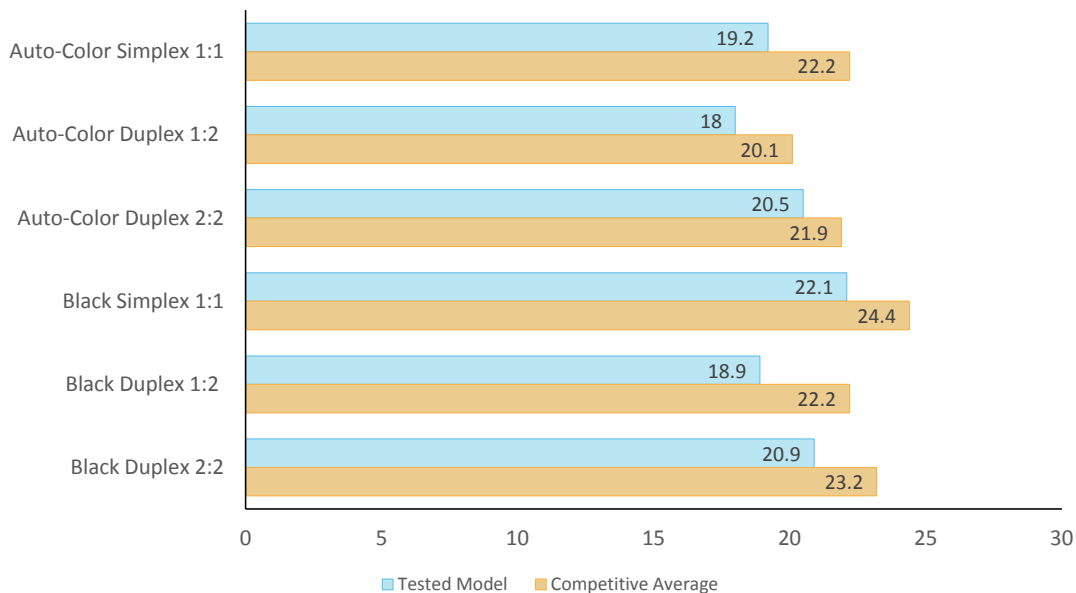
First-copy time is measured as the time it takes for a single copy to completely exit the device when a copy is made from an original placed in the document feeder and on the platen.

Copy Speed (Single-Set; in CPM)



Single-set copy speed is tested using a 10-page black document. Timing begins as the start button is pressed, pages are scanned through the document feeder and timing ends when the last page of a single-set of the document exits the device.

Average Copy Speed (Multi-Set; in CPM)



Copy speed is tested using a 3-page and a 10-page black document. BLI obtains the overall speed by averaging the tested speed for each run length (1, 5, 10 and 20 sets).

POWER CONSUMPTION

Not Tested

Because the unit was field tested, BLI technicians could not calculate annual power consumption.

Environmental Features

Specified capable of running recycled paper (30%/50%/100% post-consumer content)	Yes/Yes/Yes
Instant/Quick Fusing	Yes
Duplexing	Standard
Toner-save mode	Yes
RoHS compliant	Yes
Toner cartridge recycling program for this product	Yes
Ability to program features such as duplexing and auto shut-off over entire fleet	Yes
What tool can be used to do this?	

Eco-Label Certifications

ENERGY STAR	Yes
Other	Canada EcoLogo, Germany Blue Angel, Japan Eco Mark; ECMA-370/The Eco

INA: The vendor declined to provide this information
NA: Not applicable

Supporting Test Data

Test Environment: This product was tested in BLI's environmentally controlled US test lab, which replicates typical office conditions.

Test Equipment: BLI's dedicated test network, consisting of Windows 2008 and Microsoft Exchange servers, Windows 7 workstations, 10/100/1000BaseTX network switches and CAT6 cabling.

Test Duration: A single product is tested for two months, five weeks of which consists of a durability test during which the product is run at its manufacturer-rated maximum monthly duty cycle, with 25 percent of the test volume comprised of copy jobs and 75 percent comprised of print jobs. BLI's daily test usage is designed to replicate real-world use over an eight-hour workday, and as such includes a mix of various-size documents, simplex and duplex modes, and a mix of short, moderate and long run lengths, and on/off cycles, throughout the day. The durability evaluation also includes testing of the document feeder/scanner in simplex and duplex modes for an additional 10 percent of the monthly maximum volume, evenly divided over the course of the test.

Tested Configuration: KYOCERA TASKalfa 2552ci base unit, plus Scan extension kit (searchable PDF/OCR), E Data security kit, DP-7110 duplex single pass feeder and DF-7110 internal finisher.

Test Procedures: BLI's lab testing includes both BLI proprietary and industry-standard test procedures and documents. In addition to a visual image quality evaluation, optical density of primary color (CMYK) solid fill output is measured using a densitometer, and color gamut and consistency are evaluated using a color spectrophotometer. The reliability test is conducted using Georgia Pacific and Boise paper in the US, and UPM, Data Copy and Mondi paper in the UK. In both labs, 30 percent of the paper is recycled. The media used for image quality testing is Georgia Pacific Printing Paper (24 lb., 96 brightness) in the US and UPM Future ImageTech 100 gsm in the UK.

Competitive Group: The analysis in this report compares the tested device to a group of all other currently available like models (e.g., color vs. color, copier-based vs. copier-based) in the same speed range (5 ppm up and down from the speed of the tested device) with support for the same media size. For test performance categories, the results are compared with those of currently available tested models in the group, whereas for feature set and pricing, the comparison is made against all currently available models in the group, whether tested or not. The pricing analysis is for devices comparably configured with accessories and the most common options.

Note: This report is based on BLI testing one representative test sample at a specific point in time. BLI is not responsible for differences in performance that may be the result of lot-to-lot variation, changes in production and machine modifications implemented by the manufacturer, service issues or any other reason beyond BLI's control.

About Buyers Laboratory: Buyers Laboratory (BLI) is the world's leading independent provider of analytical information and testing services to the document management industry. For over 50 years, buyers have relied on BLI to help them differentiate products' strengths and weaknesses and make the best purchasing decisions, while industry sales, marketing and product professionals have turned to BLI for insightful competitive intelligence and valued guidance on product development, competitive positioning and sales channel and marketing support. BLI also offers private, for-hire testing services that help manufacturers develop and market better products and consumables.

KEYPOINT INTELLIGENCE - BUYERS LAB • NORTH AMERICA • EUROPE • ASIA

Gerry Stoia, CEO

Deanna Flanick, CRO

Brian O'Connor, CFO

Jeff Hayes

Managing Director
Jeff.Hayes@keypointintelligence.com

Randy Dazo

Group Director, Office Technology & Services Group
Randy.Dazo@keypointintelligence.com

Jamie Bsales

Director, Solutions Analysis
Jamie.Bsales@keypointintelligence.com

George Mikolay

Associate Director, A3/Production
George.Mikolay@keypointintelligence.com

Marlene Orr

Director, Printers/A4 MFP Analysis
Marlene.Orr@keypointintelligence.com

Carl Schell

Managing Editor
Carl.Schell@keypointintelligence.com

U.S. ANALYSTS 

Kris Alvarez

Editor
Kris.Alvarez@keypointintelligence.com

Lee Davis

Editor, Scanners/Software Evaluation
Lee.Davis@keypointintelligence.com

Kaitlin Shaw

Editor, Printers/A4 MFPs
Kaitlin.Shaw@keypointintelligence.com

Robert Watts

Editor, Software Evaluation
Robert.Watts@keypointintelligence.com

EUROPEAN ANALYSTS 

Priya Gohil

Senior Editor
Priya.Gohil@keypointintelligence.com

Simon Plumtree

Senior Editor
Simon.Plumtree@keypointintelligence.com

Andrew Unsworth

Associate Editor
Andrew.Unsworth@keypointintelligence.com

LABORATORY 

Pete Emory

Director of U.S. Research and Lab Services

David Sweetnam

Director of EMEA Research and Lab Services

COMMERCIAL

Mike Fergus

Vice President of Marketing

Gerry O'Rourke

Director, BLI International

CERTIFICATE OF RELIABILITY

Awarded to

KYOCERA Document Solutions America, Inc.

for the performance of the

KYOCERA TASKalfa 2552ci

in BLI's in-house durability test*



A handwritten signature in black ink, appearing to read 'Gerry Stoia'.

GERRY STOIA, CEO

SEPTEMBER 2017

* Reliability, scan and image quality results are based on the performance of the KYOCERA TASKalfa 3252ci, which uses the same engine.

This is to certify that when subjected to a 125,000-impression and 12,500-scan Buyers Lab durability test, the KYOCERA TASKalfa 2552ci proved to be a highly reliable product.

BUYERS LABORATORY

THE LEADING INDEPENDENT OFFICE PRODUCTS TEST LAB AND BUSINESS CONSUMER ADVOCATE

NORTH AMERICA • EUROPE • ASIA • KEYPOINTINTELLIGENCE.COM

©2017 Keypoint Intelligence. Reproduced with permission.